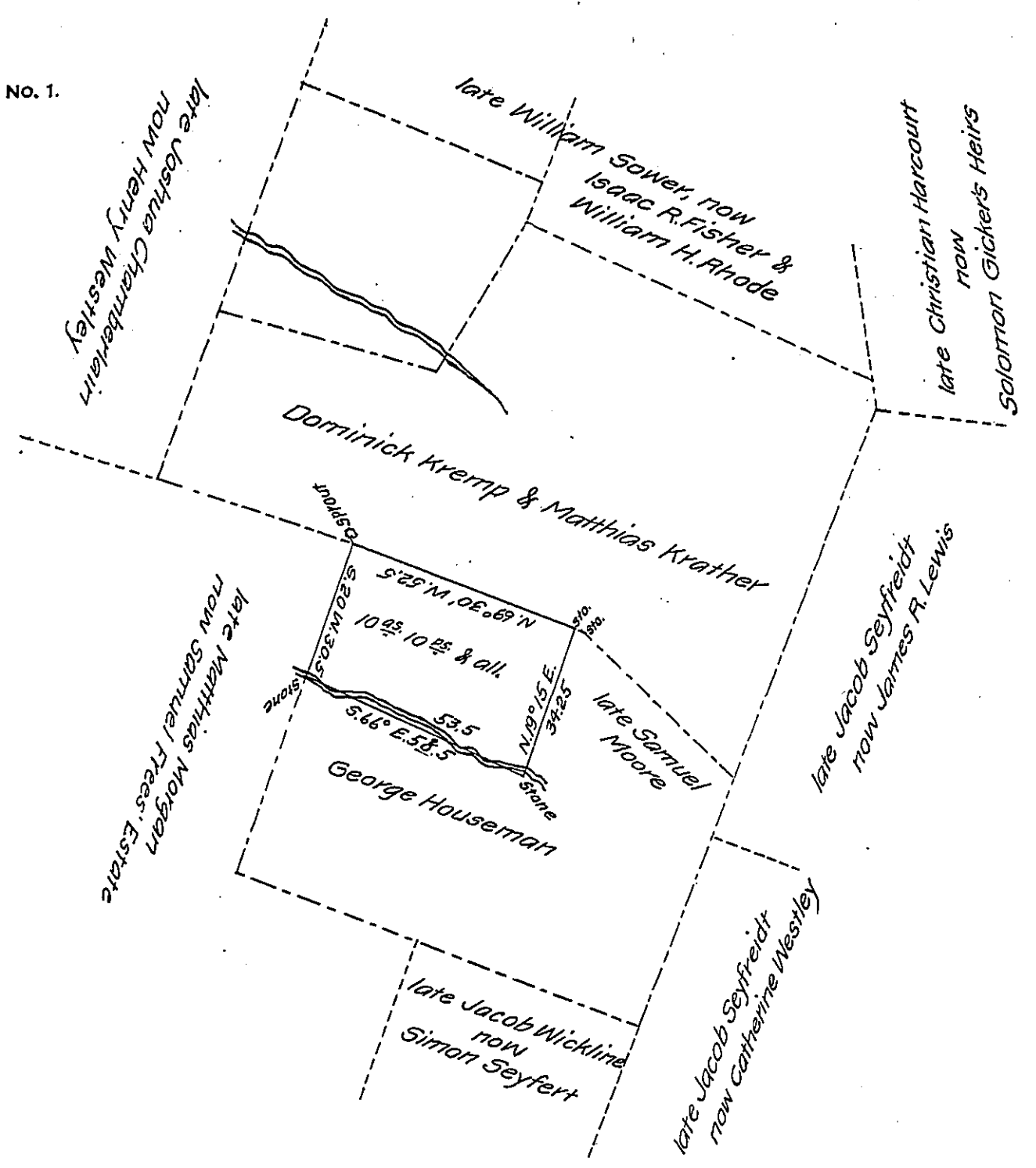


FORM NO. 1.



Situate in the Township of Robeson in the County of Berks, containing Ten acres & ten perches & allowance of six per cent. being part of a larger tract of land containing One hundred and nine acres & seventy-five perches & allowance of six per cent. Surveyed unto George Sower in pursuance of a Warrant dated the 31st. day of October, 1750.

Resurveyed the above for James R. Lewis on the 4th day of October,

1864.

Daniel S. Zacharias, C.S.

To the Hon. James P. Barr,
Surveyor General
Pennia.

IN TESTIMONY that the above is a copy of the original remaining on file in the Department of Internal Affairs of Pennsylvania, made conformably to an Act of Assembly approved the 16th day of February 1833, I have hereunto set my hand and caused the Seal of said Department to be affixed at Harrisburg, this twenty-eighth day of January, 1908

Henry Hoover
Secretary of Internal Affairs.